

## Solrif



### Product

**PV-Montagesystem Indach Solrif®**

### Producer / CH supplier

**Ernst Schweizer AG, Metallbau**

### Address

**Bahnhofplatz 11  
8908 Hedingen**

### Contact

**Tel: +41 44 763 61 11**

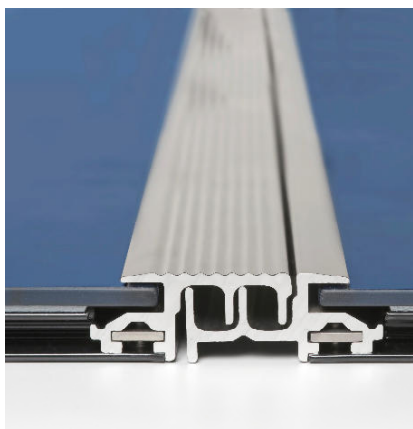
**Fax: +41 44 763 61 19**

**Mail : [info@schweizer-metallbau.ch](mailto:info@schweizer-metallbau.ch)**

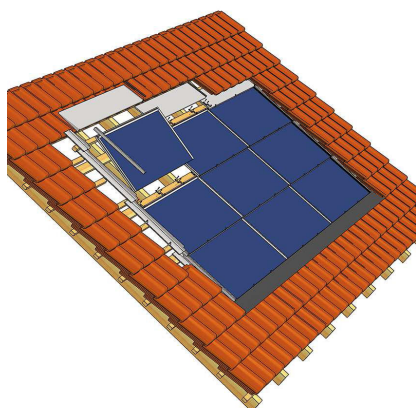
**Web: [www.schweizer-metallbau.ch](http://www.schweizer-metallbau.ch)**

## Product specifics

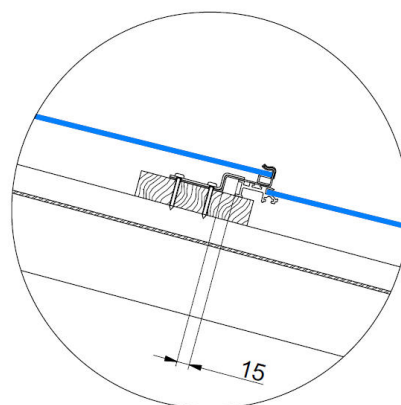
Solrif® is a module frame and mounting system specifically designed for integrating PV modules into pitched roofs, covering either parts or entire roofs. PV modules that are equipped with the Solrif® frame work like regular solar panels but also act as roof tiles. The product was launched in 1999. Solrif® modules can be installed on ordinary wooden roof structures just like conventional roof tiles or slates. The modules are secured by clamps. Individual modules can be removed one by one. Good ventilation in the roof structure means the electrical performance is similar to conventional on-roof PV. Some construction materials are saved resulting in system costs no higher than on-roof PV. Many PV manufacturers offer their modules with Solrif® frames.



Module frames are interlocking left to right much like tiles



Integration (partial roof)



Modules are shingled from top to bottom