

SUPSI

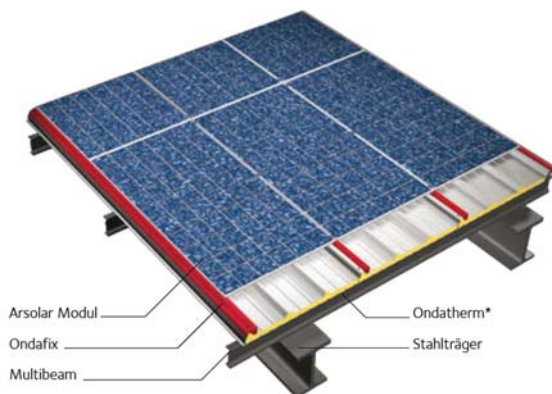
Swiss BiPV Competence Centre

For BAPV

Detail sheet

Fastening systems for roofs

Arsolar® Plus



Product	Arsolarplus® Plus
Producer / CH supplier	ArcelorMittal Construction Suisse
Address	Studacherstrasse 7 CH-5416 Kirchdorf
Contact	Tel: +41 56 296 10 10 Fax: +41 56 296 10 20

Mail : info@arcelormittal-construction.ch

Web: www.arcelormittal-construction.ch

Product specifics

Arsolar Plus® is a watertight and insulated roof system on which photovoltaic modules are fixed. The framed photovoltaic modules used have a dimension of 1635 x 990 mm and are fixed by a patented supporting rail on ONDATHERM roof panels providing optimum ventilation for better electrical efficiency.

Technology:	Multicrystalline
Power [W]:	228
Size [mm] L, w, t:	1635 x 990 x 38
Specific power [W/m²]:	421
Price [CHF/m²]:	n.d.
Module weight [Kg]:	22
Specific weight [Kg/m²]:	13.6
Min. tilt:	n.d.
Custom made:	-
Certifications:	-

Product details

Aufbau Arsolar® Plus Modul

