

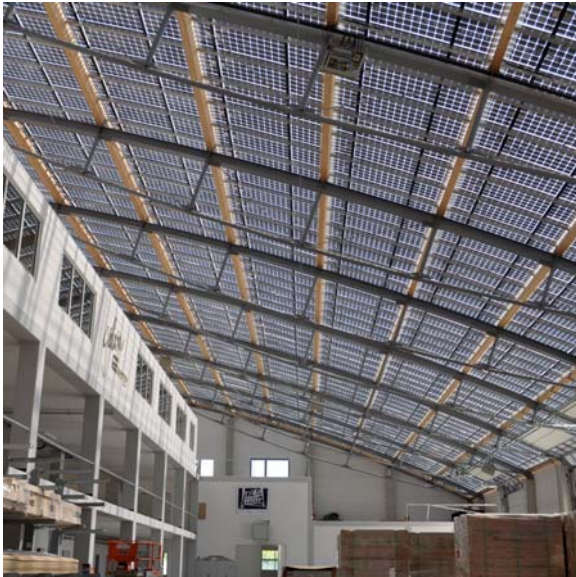
SUPSI

Swiss BiPV Competence Centre

Detail sheet

Semi-transparent elements for glass

Galaxy Energy Indachsystem



Product Galaxy Energy Indachsystem

**Producer /
CH supplier** Galaxy Energy GmbH

Address Sonnenstrasse 2
DE-89180 Berghülen

Contact Tel: +49 73 44 92 45 00
Fax: +49 7344 92 45 0 101

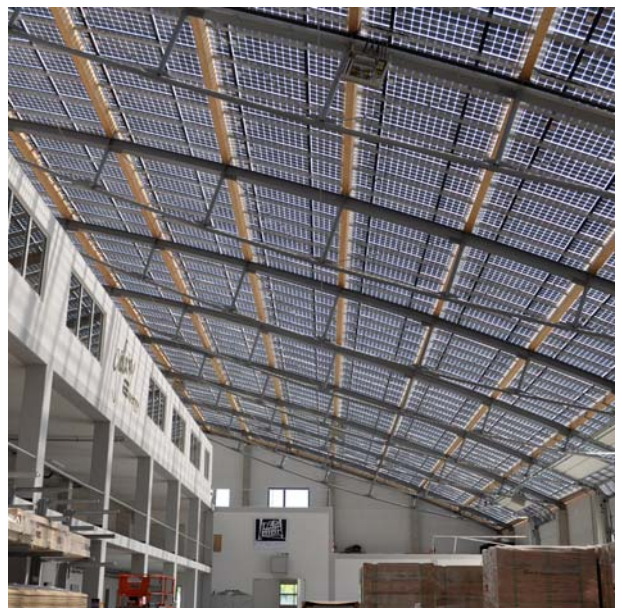
Mail: info@galaxy-energy.com
Web: www.galaxy-energy.com

Product specifics

The Galaxy Energy Indachsystem consists of the Galaxy Energy rafter, specially design for PV integration, and the Galaxy Standard PV-modules. Together they provide a complete waterproofness. The roof may be insulated or non-insulated. The completely enclosed module-roof reduces the accumulation of snow during the winter months. A more aesthetic look can be achieved by using the Edition black or blue modules. Modules with transparent back sheet can also be installed to replace light domes or windows.

Technology:	Monocrystalline
Power [W]:	185-270
Size [mm] L, w, t:	1580 x 808 x 50, 1575 x 1060 x 50, 1640 x 990 x 50
Specific power [W/m²]:	145-162
Price [CHF/m²]:	200-300 (€/m²)
Module weight [Kg]:	16-20
Specific weight [Kg/m²]:	n.d.
Min. tilt:	10°
Custom made:	-
Certifications:	IEC 61215, IEC 61730

Product details



Swiss BiPV Competence Centre, Campus Trevano, CH-6952 Canobbio, info@bipv.ch, www.bipv.ch