

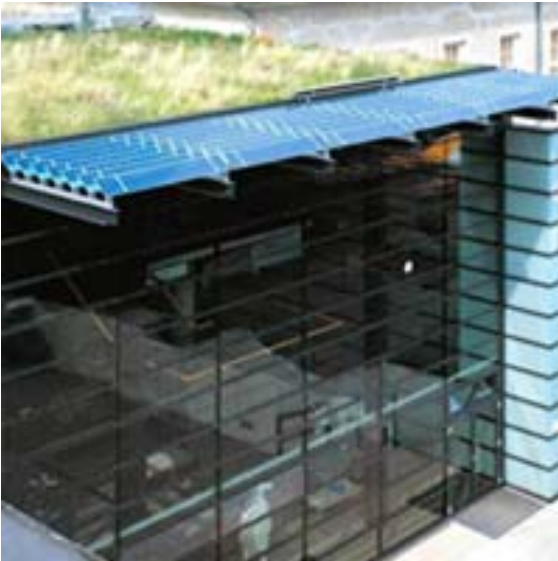
SUPSI

Swiss BiPV Competence Centre

Detail sheet

Solar shadings

Shadovoltaic



Product	Shadovoltaic
Producer / CH supplier	Colt International
Address	Colt International (Schweiz) AG Ruessenstrasse 5 CH - 6340 Baar
Contact	Tel: +41 41 768 54 54 Fax: +41 41 768 54 55 Mail : info@ch.coltgroup.com Web: www.colt-info.de

Product specifics

Fixed or mobile sunshade for facade or roof. Linear or point fastening system. Sunshade with large width (up to 4m) require an adding structure. The use of a system without a fixed rotation axis allow to move the whole system in a vertical position and give the appearance of a continuous façade. In addition to the common electronic/electromechanical control system, there is a thermal hydraulic actuator (Girasol) providing sun tracking without using any energy input or electronic regulator.

Technology:	Monocrystalline, multicrystalline
Power [W]:	n.d.
Size [mm] L, w, t:	Type LS1: 3000 (max) x 500 (max), Type LS2: 2000 (max) x 500 (max)
Specific power [W/m²]:	n.d.
Price [CHF/m²]:	n.d.
Module weight [Kg]:	n.d.
Specific weight [Kg/m²]:	n.d.
Min. tilt:	n.d.
Custom made:	n.d.
Certifications:	n.d.

Product details

