

## SUPSI

Swiss BiPV Competence Centre

### Detail sheet

---

## PV Tiles

# FATH EnergyRoof



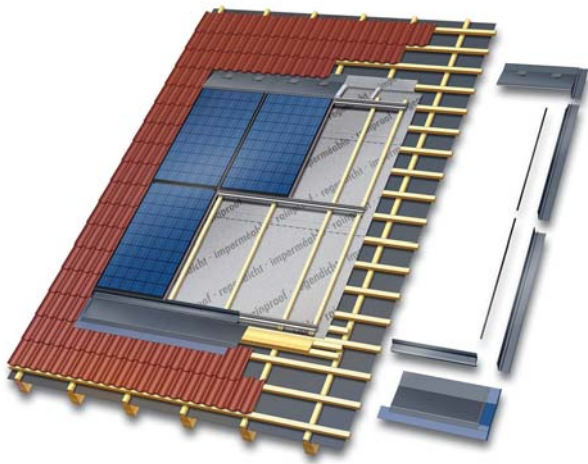
<b>Product</b>	<b>FATH EnergyRoof</b>
<b>Producer / CH supplier</b>	<b>FATH Solar GmbH</b>
<b>Address</b>	<b>Gewerbepark Hügelmühle 31 D-91174 Spalt</b>
<b>Contact</b>	<b>Tel: +49 9175 7909 140 Fax: +49 9175 7909 149 Mob (Switzerland): +41 79 325 01 46</b>
	<b>Mail: <a href="mailto:info.de@fath-solar.com">info.de@fath-solar.com</a></b>
	<b>Web: <a href="http://www.fath-solar.com">www.fath-solar.com</a></b>

### Product specifics

The FATH EnergyRoof system can be installed not only easy and fast, but it also creates a visual uniformity. Due to the different mounting options this system offers, it can be optimally adjusted to each particular building situation. May be fully or partially integrated, but can also be mounted on roof. In the same system, there is also the possibility of integrating the window roof FATH Sky or the solar thermal collector FATH JOULE.

<b>Technology:</b>	<b>Monocrystalline, multicrystalline</b>
<b>Power [W]:</b>	<b>250-265 (monocrystalline), 220-235 (multicrystalline)</b>
<b>Size [mm] L, w, t:</b>	<b>1665 x 1019 x 48</b>
<b>Specific power [W/m<sup>2</sup>]:</b>	<b>147-156 (monocrystalline), 129-138 (multicrystalline)</b>
<b>Price [CHF/m<sup>2</sup>]:</b>	<b>n.d.</b>
<b>Module weight [Kg]:</b>	<b>24</b>
<b>Specific weight [Kg/m<sup>2</sup>]:</b>	<b>14.1</b>
<b>Min. tilt:</b>	<b>20° (6° possible with a modified substructure)</b>
<b>Custom made:</b>	<b>Dummy elements, dimensions, shape, color of frames (RAL)</b>
<b>Certifications:</b>	<b>IEC 61215, IEC 61730</b>

## Product details



Swiss BiPV Competence Centre, Campus Trevano, CH-6952 Canobbio, [info@bipv.ch](mailto:info@bipv.ch), [www.bipv.ch](http://www.bipv.ch)