

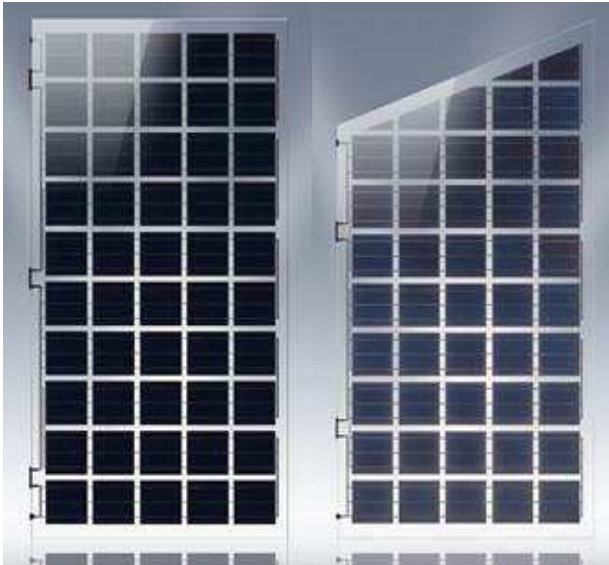
SUPSI

Swiss BiPV Competence Centre

Detail sheet

Semi-transparent element for glass

eFORM Crystal



Product	eFORM Crystal
Producer / CH supplier	SUNOVATION GmbH
Address	Glanzstoffstraße, 21 D-63820 Elsenfeld
Contact	Tel: +49(0) 6022 / 26573-0 Fax: +49(0) 6022 / 26573-44 Mail : info@sunovation.de Web: www.sunovation.de

Product specifics

SUNOVATION solar power modules from the eFORM Crystal line consist of an intelligent glass-glass composition. They combine the benefit of a modern glass surface with the one of a power generating photovoltaic element. Contrary to the laminated glass modules commonly seen in the market, which are rigidly laminated in a complex process, the layers of the eFORM modules are flexibly connected to each other in a cold filling process. This does not only save energy for warming up the glass, but also enables much more varieties with regard to cell coverage and module geometry.

Technology:	Monocrystalline, multicrystalline
Power [W]:	50-650 W
Size [mm] L, w, t:	Max 3,500x1,500
Specific power [W/m²]:	Ca. 50-140, depending on transparency
Price [CHF/m²]:	On request
Module weight [Kg]:	According to static requirements
Specific weight [Kg/m²]:	According to static requirements
Custom made:	module- and cell-color, transparency, shape and dimensions, innerside pv-cell-cover for attractive appearance from inside of the building, thermal insulating value, glass design
Certifications:	On request

Product details

