

## SUPSI

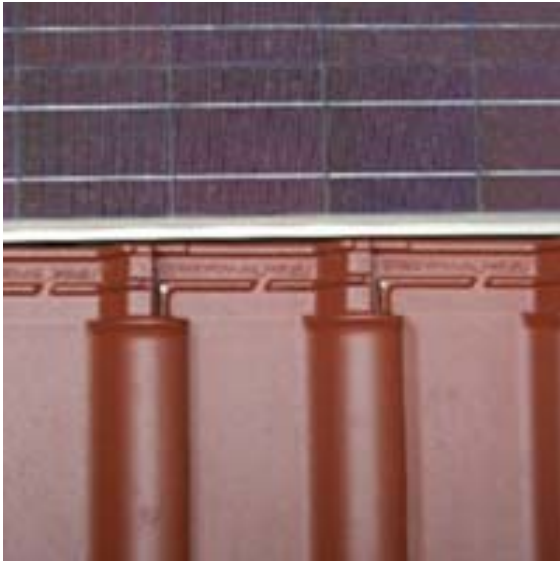
Swiss BiPV Competence Centre

### Detail sheet

---

## PV Tiles

### High efficiency color solar cell



<b>Product</b>	<b>High efficiency color solar cell</b>
<b>Producer / CH supplier</b>	<b>LOF SOLAR</b>
<b>Address</b>	<b>2F, No. 6 Prosperity Road 2 Hsinchu Science Park, 300 Taiwan</b>
<b>Contact</b>	<b>Tel: +886 3 666 2616 Fax: +886 3 666 3856 Mail : <a href="mailto:contact@lofsolar.com">contact@lofsolar.com</a> Web: <a href="http://www.lofsolar.com">www.lofsolar.com</a></b>

### Product specifics

Can be integrated into many different building materials and substrates, such as roof tile, slate, shingles or panels. Other application ideas include solar wall (building cladding/curtain walls/atrium glass), solar windows (skylights/sunshades), or solar canopy. The two tiles available are "Tile red" and "True steel". Many color and size possibilities.

<b>Technology:</b>	<b>Monocrystalline, multicrystalline</b>
<b>Power [W]:</b>	<b>49.71</b>
<b>Size [mm] L, w, t:</b>	<b>1092 x 312</b>
<b>Specific power [W/m<sup>2</sup>]:</b>	<b>146.2</b>
<b>Price [CHF/m<sup>2</sup>]:</b>	<b>n.d.</b>
<b>Module weight [Kg]:</b>	<b>n.d.</b>
<b>Specific weight [Kg/m<sup>2</sup>]:</b>	<b>n.d.</b>
<b>Min. tilt:</b>	<b>n.d.</b>
<b>Custom made:</b>	<b>Dimensions, color cell</b>
<b>Certifications:</b>	<b>n.d.</b>

## Product details

