

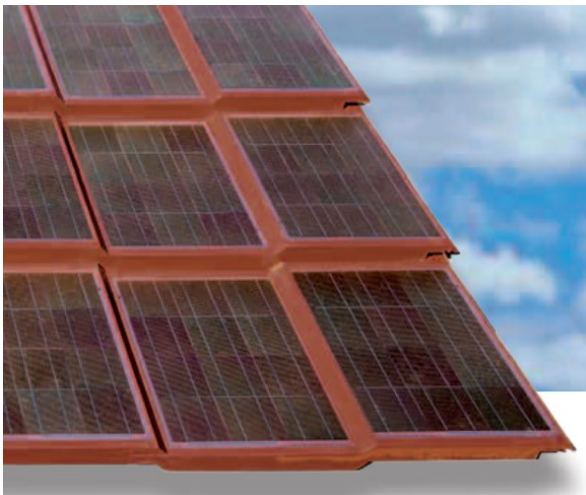
## SUPSI

Swiss BiPV Competence Centre

### Detail sheet

## Solar Tiles

### GTFV 100



<b>Product</b>	<b>GTFV 100</b>
<b>Producer / CH supplier</b>	<b>SOLARTEG srl</b>
<b>Address</b>	<b>Via Ettore Ximenes, 1 - 20125 Milano, Italy</b>
<b>Contact</b>	<b>Tel: +39 02 8707 4968 Mob: +39 349 56 58 634 Mail : <a href="mailto:info@solarteg.it">info@solarteg.it</a>  Web: <a href="http://www.solarteg.it/">http://www.solarteg.it/</a></b>

### Product specifics

The photovoltaic tile GTFV100 consists of three components: a) one supporting frame, b) two PV modules embedded in the frame, c) the patented electrical connector embedded also in the frame. The whole structure is walkable; side and front overlapping of the tiles ensure water tightness. The supporting frame is made of Sheet Molding Compound (SMC) used in the automotive industry for the body of sport cars. Supporting ribs assure the walkability. Grooves have been provided to host the intra tiles electrical connections. The coloring components are blended into the SMC; other frame colors are available on request beyond our standard tile-red color. The PV modules are embedded into the frame and fixed with UV resistant silicone. Each module consists of 12 multi crystalline 6" tile-red colored PV cells (other cell colors are available on request). Cells are encapsulated using EVA between a 3.2 mm tempered textured solar glass and a PET based back sheet. The connector consists of two complementary joints (upper and lower). The upper one is embedded in the upper right edge of the GTFV100 and the lower one in its upper left edge. Two adjacent GTFV100 are superposed so that the connector's pin allows the electrical connection without any cable.

<b>Technology:</b>	<b>Multicristalline</b>
<b>Power [W]:</b>	<b>100</b>
<b>Size [mm] L, w, t:</b>	<b>1195 x 820 x 40</b>
<b>Specific power [W/m<sup>2</sup>]:</b>	<b>130</b>
<b>Price [CHF/m<sup>2</sup>]:</b>	<b>300-350 (only material)</b>
<b>Module weight [Kg]:</b>	<b>15,8</b>
<b>Specific weight [Kg/m<sup>2</sup>]:</b>	<b>20,3</b>
<b>Min. tilt:</b>	<b>17°</b>
<b>Custom made:</b>	<b>cell color, frame color, glass type</b>
<b>Certifications:</b>	<b>In progress</b>

## Product details



Swiss BiPV Competence Centre, Campus Trevano, CH-6952 Canobbio, [info@bipv.ch](mailto:info@bipv.ch), [www.bipv.ch](http://www.bipv.ch)