

## SUPSI

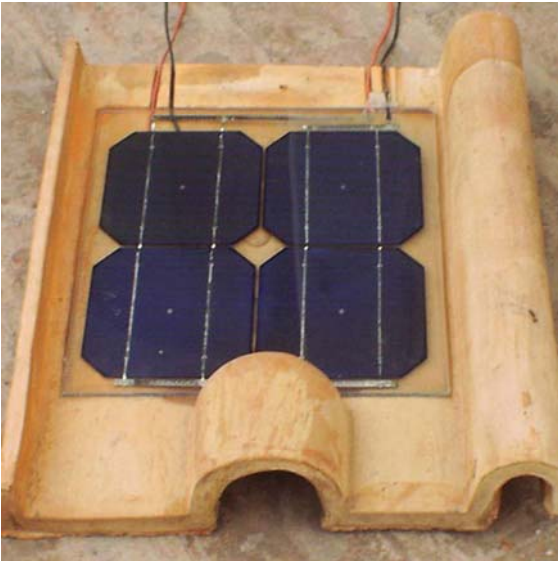
Swiss BiPV Competence Centre

### Detail sheet

---

## PV Tiles

### Tegole DF2-DF3 in cotto



<b>Product</b>	<b>DF2-DF3</b>
<b>Producer / CH supplier</b>	<b>Fornace Fonti</b>
<b>Address</b>	<b>Via Giotto 41 I-45100 Grignano Polesine (RO)</b>
<b>Contact</b>	<b>Tel: +39 0425 49 40 85 Fax: +39 0425 49 43 96</b>
	<b>Mail : <a href="mailto:info@fornacefonti.it">info@fornacefonti.it</a></b>
	<b>Web: <a href="http://www.fornacefonti.it">www.fornacefonti.it</a></b>

### Product specifics

Tile produced with natural clay of the Po plain (Italy). This type of tile can be mounted as a normal tile, and it is possible, in a second time, to insert photovoltaic modules by anticipating cabling. At this time, two models of tile are available, a third one is in the testing phase. Currently a PV module of four 8 or 12 Wp cells 125x125 can be installed.

<b>Technology:</b>	<b>Monocrystalline; multicrystalline</b>
<b>Power [W]:</b>	<b>8; 12</b>
<b>Size [mm] L, w, t:</b>	<b>460 x 390; 460 x 430</b>
<b>Specific power [W/m<sup>2</sup>]:</b>	<b>60 o 90; 54 o 81</b>
<b>Price [CHF/m<sup>2</sup>]:</b>	<b>n.a.</b>
<b>Module weight [Kg]:</b>	<b>n.a.</b>
<b>Specific weight [Kg/m<sup>2</sup>]:</b>	<b>n.a.</b>
<b>Min. tilt:</b>	<b>-</b>
<b>Custom made:</b>	<b>-</b>
<b>Certifications:</b>	<b>n.a.</b>

## Product details

