

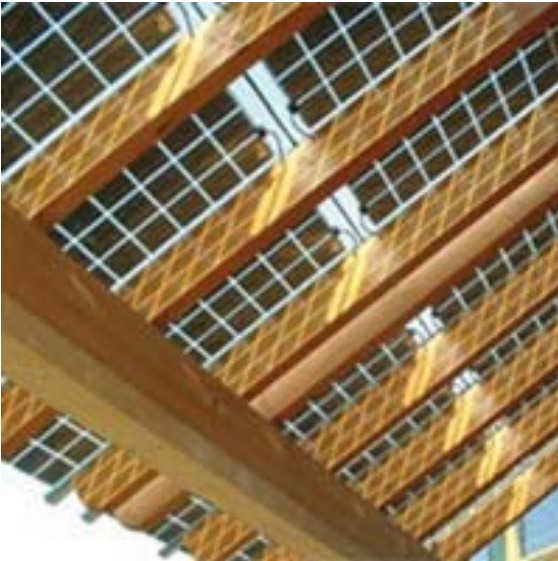
SUPSI

Swiss BiPV Competence Centre

Detail sheet

Semi-transparent elements for glass

Glass-Glass modules



| | |
|-----------------------------------|--|
| Product | Glass-Glass modules |
| Producer / CH supplier | Solarwatt AG |
| Address | Maria-Reiche-Straße 8 D-01109 Dresden |
| Contact | Tel: +49 351 8895 0 Fax: +44 351 8895 111 Mail : info@solarwatt.de Web: www.solarwatt.de |

Product specifics

The frameless and semi-transparent (glass-glass modules) design makes these modules ideal for use as structural solar panels to form part of the building envelope.

Elegant and power generating terraced roofing or projecting roofs can be created with these modules. With the suitable installation systems, attractive solutions can be implemented.

| | |
|--|---------------------------------|
| Technology: | Monocrystalline |
| Power [W]: | 130-140 |
| Size [mm] L, w, t: | 1520-1600 x 710-800 x 10 |
| Specific power [W/m²]: | 100-130 |
| Price [CHF/m²]: | n.d. |
| Module weight [Kg]: | 25-29 |
| Specific weight [Kg/m²]: | 22.7-23.2 |
| Min. tilt: | n.d. |
| Custom made: | - |
| Certifications: | IEC61215, IEC61730 |

Product details

