

## SUPSI

Swiss BiPV Competence Centre

### Detail sheet

---

## Semi-transparent elements for glass

### PowerGlaz



<b>Product</b>	<b>PowerGlaz</b>
<b>Producer / CH supplier</b>	<b>Romag</b>
<b>Address</b>	<b>Leadgate Industrial Estate Leadgate Consett</b>
<b>Contact</b>	<b>GB-County Durham - DH8 7RS</b>

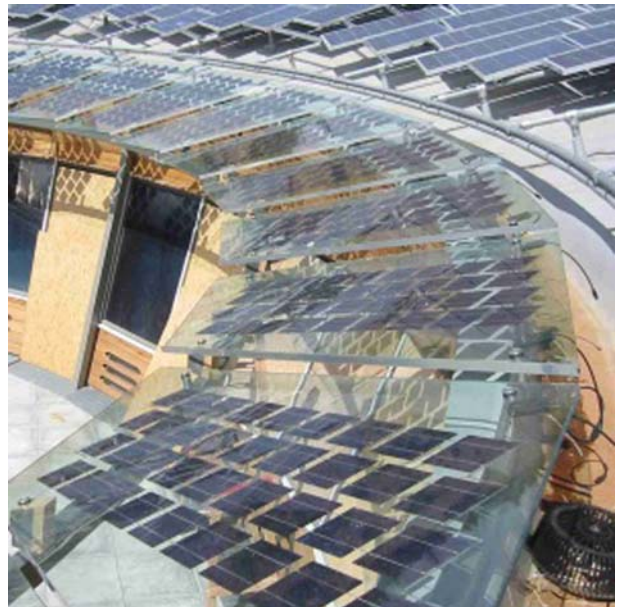
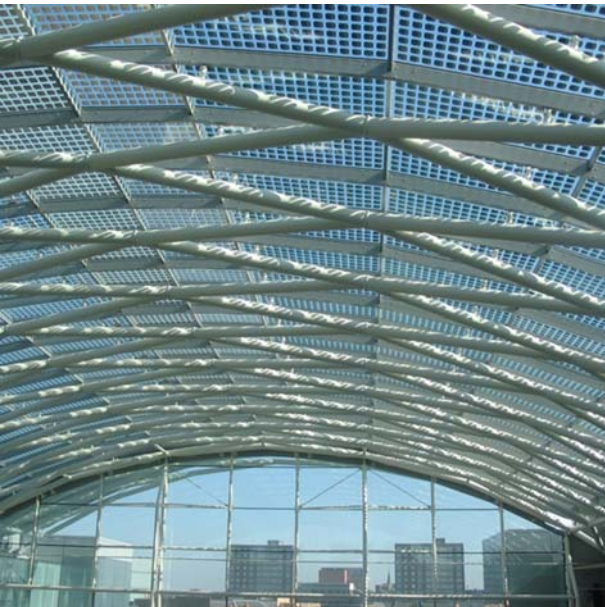
Tel: +44 120 750 00 00  
Fax: +44 120 759 19 79  
Mail : [info@romag.co.uk](mailto:info@romag.co.uk)  
Web: [www.romag.co.uk](http://www.romag.co.uk)

### Product specifics

PowerGlaz BIPV can be integrated into vertical glazing, pitched glazing to canopies or walkways and glazed roofs such as atria. It can be single or double glazed and will fit easily into most glazing systems. Each type has its own aesthetic appeal and the choice may depend on the designer's and architect's vision of the building as much as their efficiency.

<b>Technology:</b>	<b>Monocrystalline, multicrystalline</b>
<b>Power [W]:</b>	<b>165-235</b>
<b>Size [mm] L, w, t:</b>	<b>1318-1640 x 994 x 46</b>
<b>Specific power [W/m<sup>2</sup>]:</b>	<b>126.9-146.9</b>
<b>Price [CHF/m<sup>2</sup>]:</b>	<b>n.d.</b>
<b>Module weight [Kg]:</b>	<b>17-21</b>
<b>Specific weight [Kg/m<sup>2</sup>]:</b>	<b>13.1</b>
<b>Min. tilt:</b>	<b>n.d.</b>
<b>Custom made:</b>	<b>Dimensions (4000 (max) x 2200 (max) x 9.5 (min))</b>
<b>Certifications:</b>	<b>IEC61215, IEC61730</b>

## Product details



Swiss BiPV Competence Centre, Campus Trevano, CH-6952 Canobbio, [info@bipv.ch](mailto:info@bipv.ch), [www.bipv.ch](http://www.bipv.ch)