

SUPSI

Swiss BiPV Competence Centre

Detail sheet

Facade elements

Sapa Solar



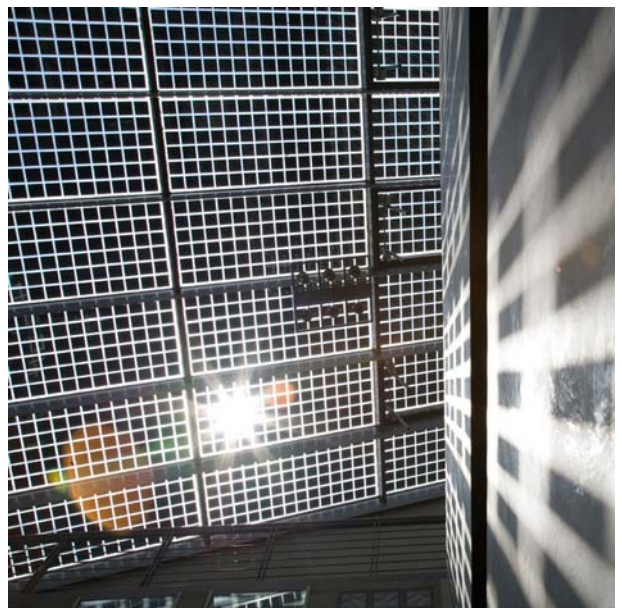
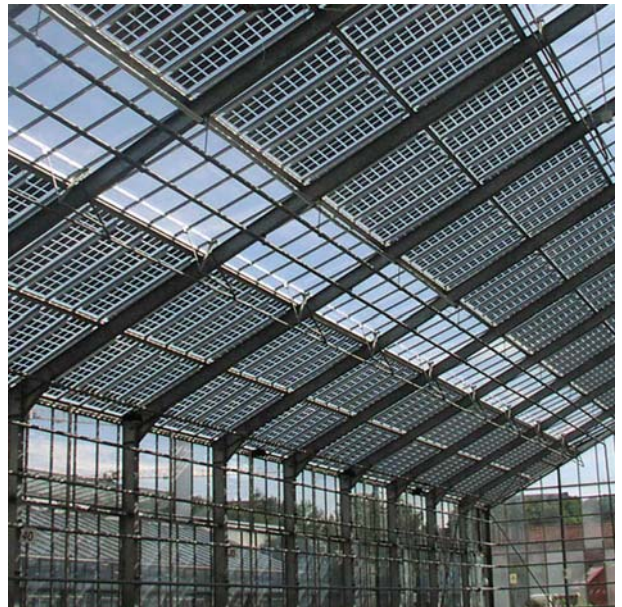
Product	Sapa Solar
Producer / CH supplier	Sapa Building System
Address	Sapa Building System Z.I. La Guérite CH-1541 Sévaz
Contact	Tel: +41 26 663 99 66 Fax: +41 26 663 99 69 Mail : info.ch@sapagroup.com Web: www.sapabuildingsystem.com

Product specifics

Sapa Solar insulating PV glasses are as easy to incorporate as standard glasses and lend themselves very well to integration into façades, curtain walls, roofs and other horizontal or vertical glass surfaces. Cell type, color and geometric arrangement allow the architect to find the best compromise between electricity production, light strategy and shading effect. Esthetics are completely preserved by an invisible electrical wiring.

Technology:	Monocrystalline, multicrystalline, thin film
Power [W]:	Custom made
Size [mm] L, w, t:	5100 (max) x 2400 (max)
Specific power [W/m²]:	Custom made
Price [CHF/m²]:	n.d.
Module weight [Kg]:	Custom made
Specific weight [Kg/m²]:	Custom made
Min. tilt:	n.d.
Custom made:	Dimensions
Certifications:	n.d.

Product details



Swiss BiPV Competence Centre, Campus Trevano, CH-6952 Canobbio, info@bipv.ch, www.bipv.ch