

SUPSI

Swiss BiPV Competence Centre

Detail sheet

Semi-transparent elements for glass

VSG-insulating glass modules and VSG



Product	VSG-insulating glass modules and VSG
Producer / CH supplier	ERTL GLAS AG / Ertex Solar
Address	Peter Mitterhofer Straße 4 A-3300 Amstetten
Contact	Tel: +43 7472 28260 615 Fax: +43 7472 28260 629 Mail : info@ertex-solar.at Web: www.ertex-solar.at

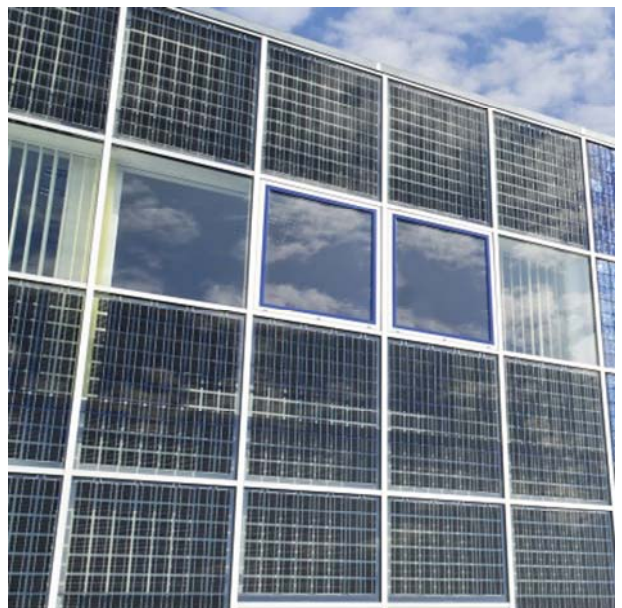
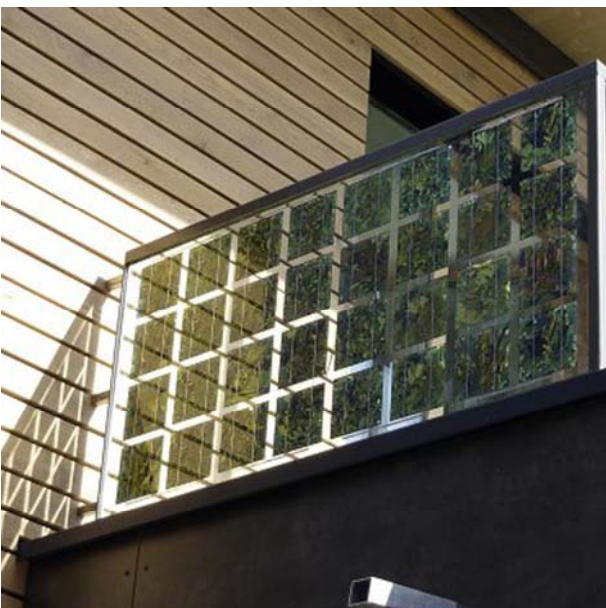
Product specifics

Glass-glass cell encapsulation, laminated safety glass technique, large size modules, selectable light transparency, combinable with façade systems, customized modules (size, structure).

Applications for: roofs, shadowing systems, car ports, canopy, projecting roof, roof integration, energy façade.

Technology:	Monocrystalline, multicrystalline
Power [W]:	Custom made
Size [mm] L, w, t:	5100 (max) x 2440 (max)
Specific power [W/m²]:	Custom made
Price [CHF/m²]:	Custom made
Module weight [Kg]:	Custom made
Specific weight [Kg/m²]:	Custom made
Min. tilt:	Custom made
Custom made:	Size, structure
Certifications:	On request

Product details



Swiss BiPV Competence Centre, Campus Trevano, CH-6952 Canobbio, info@bipv.ch, www.bipv.ch