

## SUPSI

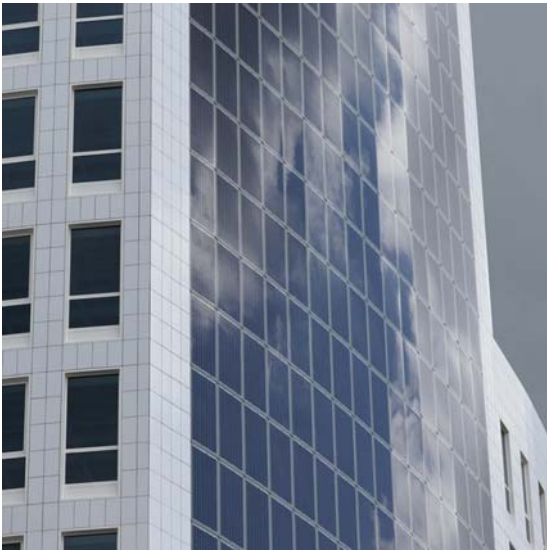
Swiss BiPV Competence Centre

### Detail sheet

---

## Facade elements

### Optisol Skin



<b>Product</b>	<b>Optisol Skin</b>
<b>Producer / CH supplier</b>	<b>Scheuten Glas</b>
<b>Address</b>	<b>Van Heemskerckweg 9 (P.O. Box 22) NL-5900 AA Venlo</b>
<b>Contact</b>	<b>Tel: +31(0)77 3599332 Fax: Mail : <a href="mailto:svanderaa@scheuten.com">svanderaa@scheuten.com</a> Web: <a href="http://www.scheuten.com">www.scheuten.com</a></b>

### Product specifics

The glass-glass Optisol<sup>®</sup> Skin product was specially designed as a 'second skin' for façade cladding and is thus particularly suited for renovation projects. It literally provides buildings with a new skin which, as a bonus, even generates solar energy. Apart from the standard sizes offered, the product can be fully customized.

<b>Technology:</b>	<b>Monocrystalline</b>
<b>Power [W]:</b>	<b>72 / 144 / 216 / 288</b>
<b>Size [mm] L, w, t:</b>	<b>590-2020 x 1070</b>
<b>Specific power [W/m<sup>2</sup>]:</b>	<b>120 / 131 / 127 / 131</b>
<b>Price [CHF/m<sup>2</sup>]:</b>	<b>n.d.</b>
<b>Module weight [Kg]:</b>	<b>13 / 23 / 33 / 43</b>
<b>Specific weight [Kg/m<sup>2</sup>]:</b>	<b>21.6 / 21 / 31.7 / 32.7</b>
<b>Min. tilt:</b>	<b>n.d.</b>
<b>Custom made:</b>	<b>Dimensions</b>
<b>Certifications:</b>	<b>IEC 61215, IEC 61730</b>

## Product details

