

## SUPSI

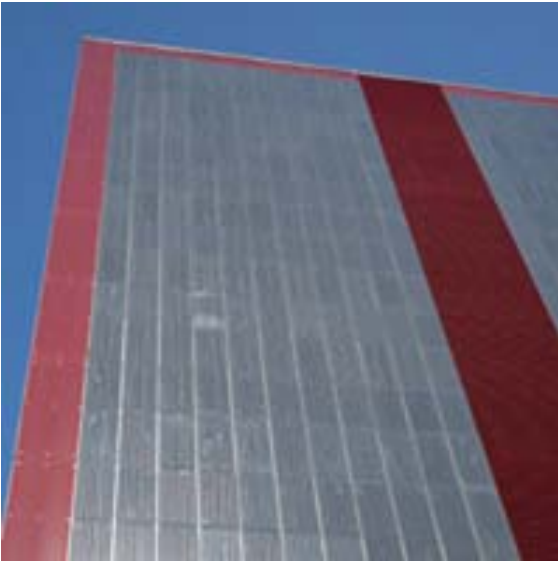
Swiss BiPV Competence Centre

### Detail sheet

---

## Facade elements

### VSG modules



<b>Product</b>	<b>VSG modules</b>
<b>Producer / CH supplier</b>	<b>ERTL GLAS AG / Ertex Solar</b>
<b>Address</b>	<b>ERTL GLAS AG / Ertex Solar Peter Mitterhofer Straße 4 A-3300 Amstetten</b>
<b>Contact</b>	<b>Tel: +43 7472 28260 615 Fax: +43 7472 28260 629 Mail : <a href="mailto:info@ertex-solar.at">info@ertex-solar.at</a> Web: <a href="http://www.ertex-solar.at">www.ertex-solar.at</a></b>

### Product specifics

Ertex-solar photovoltaic modules are produced in laminated safety glass with PVB film. Ertex-solar photovoltaic façade modules can be produced in the widest variety of shapes - in accordance with your own creative desires. They are available in sizes up to 2.440 x 5.100 mm per module. Advantages: greatly reduced length of façade profile is necessary, thus lessening, by the same token, any potential weak points. Result: homogeneous and generously spacious appearance.

<b>Technology:</b>	<b>Monocrystalline, multicrystalline</b>
<b>Power [W]:</b>	<b>Custom made</b>
<b>Size [mm] L, w, t:</b>	<b>5100 (max) x 2440 (max)</b>
<b>Specific power [W/m<sup>2</sup>]:</b>	<b>Custom made</b>
<b>Price [CHF/m<sup>2</sup>]:</b>	<b>Custom made</b>
<b>Module weight [Kg]:</b>	<b>Custom made</b>
<b>Specific weight [Kg/m<sup>2</sup>]:</b>	<b>Custom made</b>
<b>Min. tilt:</b>	<b>Custom made</b>
<b>Custom made:</b>	<b>Dimensions, color module, form</b>
<b>Certifications:</b>	<b>On request</b>

## Product details

